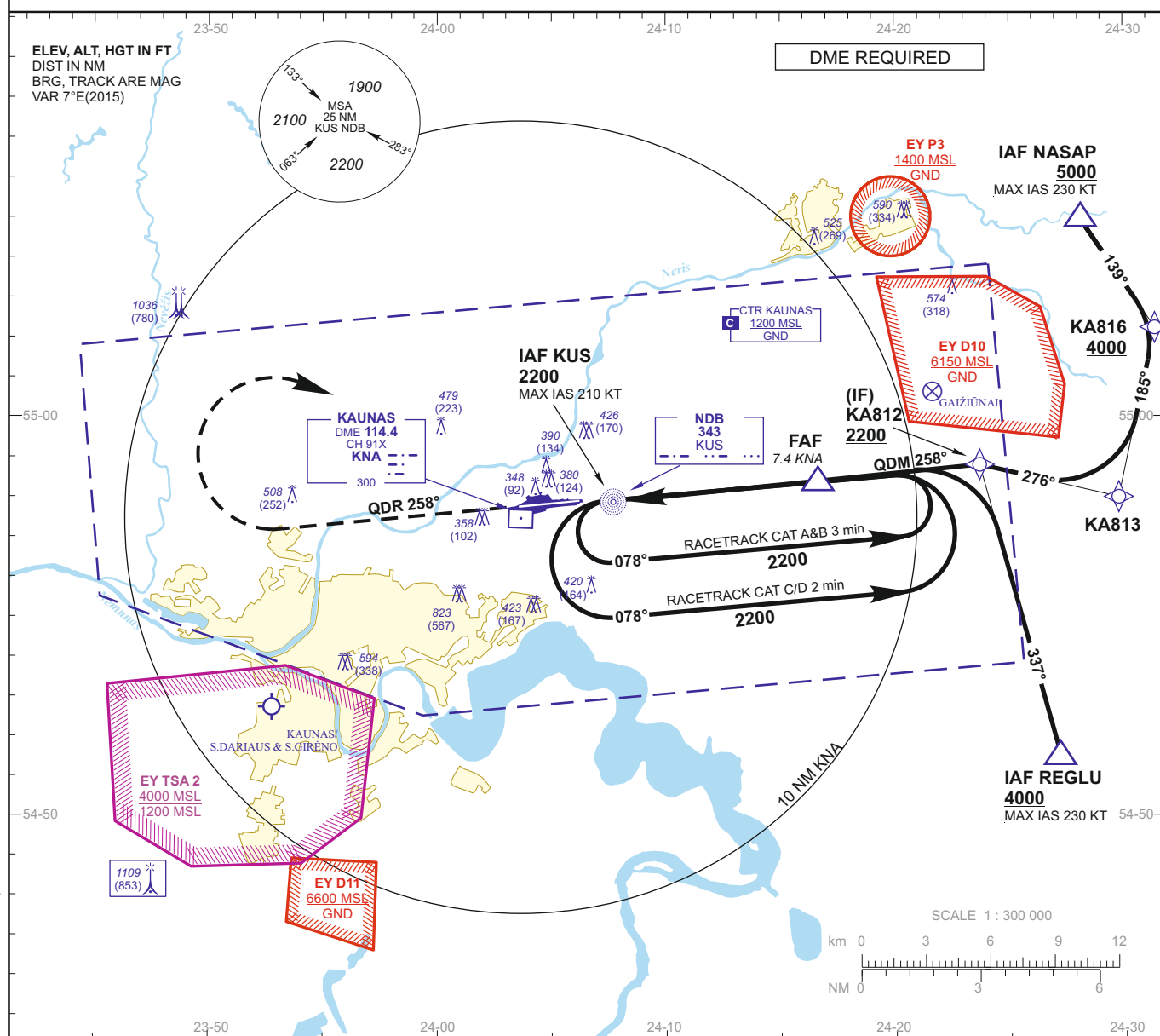
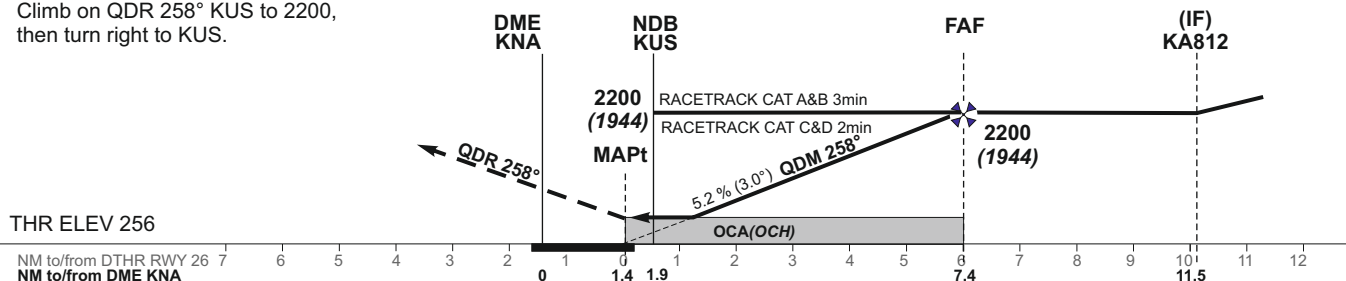


INSTRUMENT APPROACH
CHART - ICAO**AERODROME ELEV 256**
HEIGHTS RELATED TO
THR RWY 26 - ELEV 256TWR 124.200
118.500
ATIS 129.050**KAUNAS**
NDB RWY 26

MISSED APPROACH PROCEDURE

Climb on QDR 258° KUS to 2200,
then turn right to KUS.

TRANSITION ALT 5000



OCA(OCH)		A	B	C	D	DIST DME KNA		7	6	5	4	3		
STRAIGHT-IN APPROACH	NDB	740 (484)				Altitude		2090	1770	1460	1140	820		
	NDB/DME	690 (434)				Height		(1834)	(1514)	(1204)	(884)	(564)		
CIRCLING		see EYKA-AD-2.24-40 - 1				Timing not authorized for defining the MAPt								
Remark: In case of NDB APP only-proceed to IAF KUS, execute IAC.						GS		Kts	80	100	120	140	160	180
						FAF-MAPt 6.0 NM		min:sec	4:30	3:36	3:00	2:34	2:15	2:00
						Rate of descent		ft/min	415	520	625	730	835	940
						For data tabulation see verso								

Changes: lateral and vertical limits of EY D10; Missed approach procedure; (IF) KA812, KA813 and FAF coordinates; KA816 added.

KAUNAS
RWY 26

AERONAUTICAL DATA TABULATION

NDB INSTRUMENT APPROACH from IAFs(KUS, NASAP, REGLU)	
FIX/POINTS	COORDINATES
NASAP (IAF) - BRG 232.74° KUS / 15.74 NM KNA	55 04 57.2N 024 28 10.6E
REGLU (IAF) - BRG 291.72° KUS / 14.79 NM KNA	54 51 37.2N 024 27 23.7E
KUS (IAF) - 1.94 NM KNA	54 57 56.6N 024 07 18.7E
KA816 - BRG 246.46° KUS / 16.46 NM KNA	55 02 09.7N 024 31 27.3E
KA813 - BRG 263.47° KUS / 14.92 NM KNA	54 57 55.1N 024 29 51.4E
KA812 (IF) - BRG 258.28° KUS / 11.46 NM KNA	54 58 44.4N 024 23 46.6E
FAF - BRG 258.28° KUS / 7.37 NM KNA	54 58 24.2N 024 16 42.0E
MAPt - BRG 078.28° KUS / 1.37 NM KNA	54 57 53.8N 024 06 19.8E
KNA DME	54 57 37.4N 024 03 59.1E
THR RWY 26	54 57 54.62N 024 06 36.27E
DTHR RWY 26	54 57 53.80N 024 06 19.76E
Final approach descent angle: 2.98°	